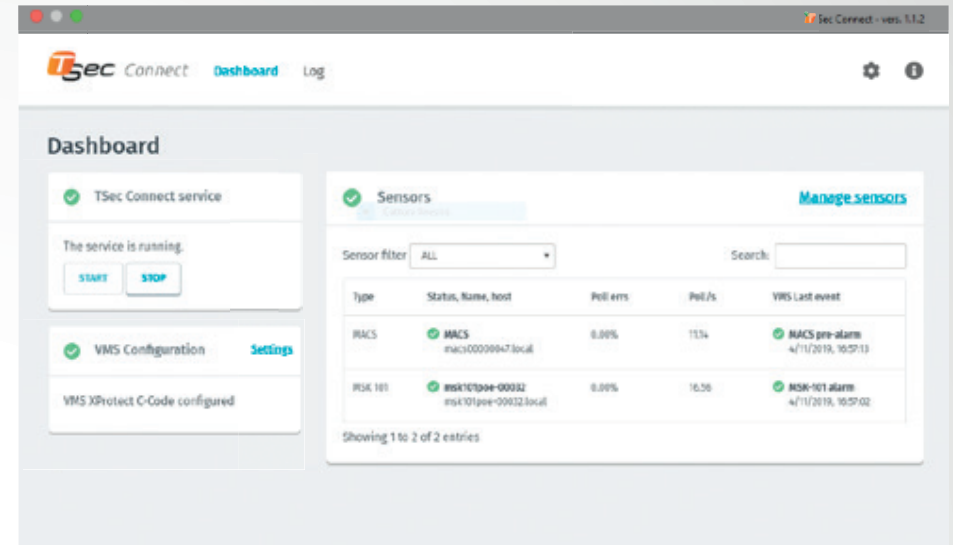


TSec Connect. Communication software.

TSec Connect is a software that allows Tsec alarm sensors connected to a network to communicate with management systems like video surveillance, access control or home automation. With a few simple steps the management system and the his IP address can be configured. Through the interface, the specific event can be setted and send to the management system for each type of alarm on every single sensor, allowing maximum customization interaction between the sensors and the system.

The main screen gives information about the service status (eg. errors of communication) and about the status of the connected and configured systems. TSec Connect communicates securely with sensors using the protocol HTTPS. Every single change of state it is then transmitted to the configured management system leaving the administrator free to choose how to manage alerts.



Main features

Model	TSec Connect
Supported operating systems	Windows
Supported devices	MACS, MSK-101-POE
Supported systems	Milestone For other systems contact supporto@tsec.it
Communication	REST Secure APIs on HTTPS
Updates speed	Up to 20 per second

Order codes

ARTICLE	DESCRIPTION	NOTES
Connect	Communication software with management systems	

