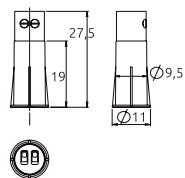


CLV-01 models

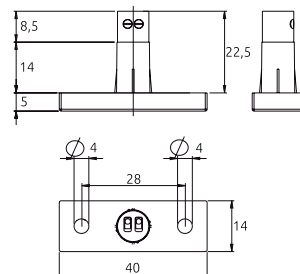
FLUSH MOUNT VIBRATION SENSORS



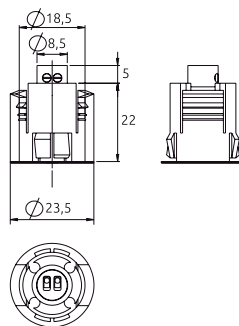
CLV-01



CLV-01 + CLV-AL



CLV-01 + CLV-BL

Magnetic vibration sensors
Screw terminals

CLIC V-series are the first vibration/shock sensors based on Magnasphere technology. Extremely small, with a 9mm case they can be easily concealed in any door or window. Thanks to their hybrid inertial/magnetic technology, CLIC vibration sensors are not subject to any positioning constraints. Therefore they can be installed in the areas of the door that are more commonly attacked by burglars, e.g., near the lock. At the same time, they guarantee a high reliability and a sensitivity comparable to the best products available on the market. This makes them compatible with analysis circuitry from all major manufacturers.

- Design based on patented Magnasphere technology, used under license
- Enhanced reliability
- Fully concealed mount with no positioning constraints
- Compatible with analysis circuitry from all major brands
- High resistance to mechanical and electrical shocks
- CLIC adapters make it ideal for any type of door and window: aluminium, PVC, wood or reinforced steel
- Screw terminals for simplified installation

TECHNICAL FEATURES

CASE
Plastic

POTTING
Internal circuitry

ELECTRICAL CONTACT
Closed with no vibrations

ELECTRICAL PARAMETERS
30 VDC max, 250 mA, 0.25 W

TERMINALS
Screw terminals

MAXIMUM COVERED RADIUS*
On doors/windows: 1.5mt

ENVIRONMENTAL CLASS
Compatible w/ Class II EN 50131

COLOUR CODES

... -N: brown
... -W: white

(* This is the maximum coverage when using VAS-series analysis boards. Coverage might decrease with other boards. Coverage might also be significantly affected by the door/window material, its type (fixed/openable), and the way it is fixed to walls.

Ordering guide

SENSOR	ADAPTER	USE	PACKAGING
CLV-01-N	//	Wood	Sensor: 5 pcs
	CLV-AL-N CLV-AL-W	Aluminium, PVC	Sensor: 5 pcs Adapter: 5 pcs
CLV-01-W	CLV-BL-N CLV-BL-W	Iron-based materials	Sensor: 5 pcs Adapter: 5 pcs