

CLH-300 models

SURFACE MOUNT MAGNETIC CONTACTS



CLH-300

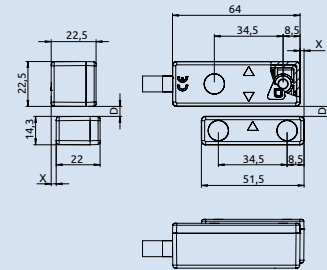
Magnetic contact
Flying lead

CLH-300 contacts offer the security afforded by Magnasphere® technology in a robust fiber-glass reinforced nylon case.

The modular cable-exit system allows the contact to be completed with a stainless steel reinforced armor (optional, art. CLH-2G10) or any other sheath with 8mm ID. The magnetic contact is composed by a standard electrical basis and a coloured cover available in brown, white and grey. Fully potted for indoor or outdoor installations.

- Design based on patented Magnasphere® technology, used under license
- Magnetic anti-masking: magnets placed outside of the protected perimeter cannot prevent the contact from opening once the reference magnet moves away
- If installed with minimum operating gap, they offer higher security than traditional triple-balanced reed contacts
- High resistance fiber-glass reinforced nylon case
- Anti-tamper screw covers
- Embedded EOL resistors available on request
- Suitable for in-line or right-angled installations without any extra mounting plates
- Modular cable exit system
- Back side cable exit
- Fully potted for indoor or outdoor installation

TECHNICAL FEATURES



CASE

Fiber-glass reinforced nylon

MAGNET

Neodymium

POTTING

Fully potted

ELECTRICAL CONTACT

Closed with magnet in secure position

EMBEDDED EOL RESISTORS

Optional on request:
r Ohm in series, r Ohm in parallel

ELECTRICAL PARAMETERS

30 VDC max, 250 mA, 0.25 W

TERMINALS

200cm 4x0.14 flying lead, PVC sheath,
tamper passthrough for standard versions
200cm 2x0.22 flying lead, PVC sheath,
for versions with embedded EOL resistors

RESISTANCE TO MECHANICAL SHOCKS

Up to 100g acceleration

SECURITY

Compatible w/ Grade 3 EN 50131-2-6

ENVIRONMENTAL CLASS

Compatible w/Class IV EN 50131-2-6

COLOUR CODES

...	-N:	brown
...	-W:	white
...	-G:	grey

Ordering guide

CONTACT	ELECTRICAL CONFIGURATION	D MAX	X MAX	PACKAGING
CLH-300	Contact closed with magnet in secure position	On ferrous mat.: 15 mm On non fer. mat.: 15 mm	10 mm	Sensor, cover, magnet, spacers, cable guide, cable guide for PVC sheath, screw covers: 1 set
CLH-300-R	Contact closed with magnet in secure position	On ferrous mat.: 15 mm On non fer. mat.: 15 mm	10 mm	Sensor, cover, magnet, spacers, cable guide, cable guide for PVC sheath, screw covers: 1 set

NOTE: Embedded EOL resistors: r Ohm in series, r Ohm in parallel.
Substitute the required resistor value to the letter "r" to get the correct ordering code.