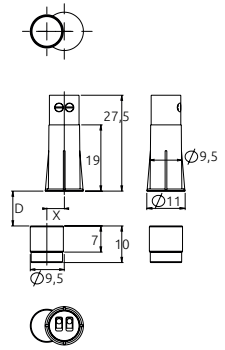


CLR-TW-T models

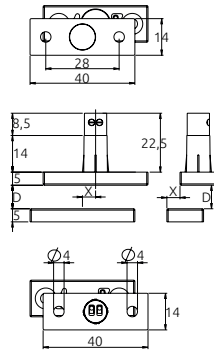
FLUSH MOUNT MAGNETIC CONTACTS



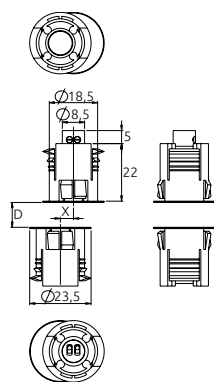
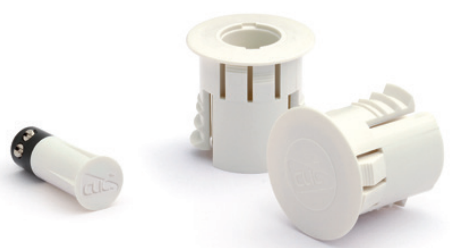
CLR-TW-T + CLR-MGA



CLR-TW-T + CLR-AL



CLR-TW-T + CLR-BL



Magnetic contact Screw terminals

CLIC R-series contacts with screw terminals are the first devices that combine high security Magnasphere® technology with the convenience of embedded EOL resistors in such a compact case.

- Design based on patented Magnasphere® technology, used under license
- Magnetic anti-masking: magnets placed outside of the protected perimeter cannot prevent the contact from opening once the reference magnet moves away
- High resistance to mechanical and electrical shocks
- CLIC adapters and magnets make it ideal for any type of door and window: aluminium, PVC, wood or reinforced steel.
- Ease of installation, simplified logistics, high security
- Fully potted circuitry
- Embedded EOL resistors available on request: ease of installation with maximum dependability
- Screw terminals for simplified installation

TECHNICAL FEATURES

CASE plastic
MAGNET Neodymium
POTTING Internal circuitry
ELECTRICAL CONTACT Closed with magnet in secure position
EMBEDDED EOL RESISTORS Optional on request: r Ohm in parallel, r Ohm in series
ELECTRICAL PARAMETERS 30 VDC max, 250 mA, 0.25 W
TERMINALS Screw terminals
RESISTANCE TO MECHANICAL SHOCKS Up to 100g acceleration
SECURITY Magnetic anti-masking: magnet placed outside of the protected perimeter
ENVIRONMENTAL CLASS Compatible w/ Class II EN 50131-2-6
COLOUR CODES ... -N: brown ... -W: white

Ordering guide

SENSOR	ADAPTER	USE	D MAX	X MAX	PACKAGING
CLR-TW-T-N	CLR-MGA-N CLR-MGA-W	Wood	On wood: 10 mm	3 mm	Sensor: 10 pcs Magnet: 10 pcs
	CLR-AL-N CLR-AL-W	Reinforced steel, aluminium, PVC	On ferrous mat.: 5 mm On non-ferrous mat.: 8 mm		Sensor: 10 pcs Adapter+Magnet: 10 sets
CLR-TW-T-W	CLR-BL-N CLR-BL-W	Reinforced steel	On ferrous mat.: 6 mm		Sensor: 10 pcs Adapter+Magnet: 5 sets

CLR-TW-T-R-N	CLR-MGA-N CLR-MGA-W	Wood	On wood: 10 mm	3 mm	Sensor: 10 pcs Magnet: 10 pcs
	CLR-AL-N CLR-AL-W	Reinforced steel, aluminium, PVC	On ferrous mat.: 5 mm On non-ferrous mat.: 8 mm		Sensor: 10 pcs Adapter+Magnet: 10 sets
CLR-TW-T-R-W	CLR-BL-N CLR-BL-W	Reinforced steel	On ferrous mat.: 6 mm		Sensor: 10 pcs Adapter+Magnet: 5 sets

NOTE: Embedded EOL resistors: r Ohm in series, r Ohm in parallel. Substitute the required resistor value to the letter "r" to get the correct ordering code.